

# Project Development

Summer 2018-19



## Our Company

Traffix Group is one of Victoria's leading specialist traffic engineering and transport planning consultancies, providing a full range of traffic engineering services to private sector, local government and state government clients.

Traffix Group is located in Glen Iris, Melbourne and is staffed by over 45 traffic engineers and related technical staff.

## Capabilities & Services

Traffix Group has an experienced team of traffic engineers and designers responsible for the development and design of a range of transport projects at all stages of the project life cycle.

Traffix Group is proud to offer a wide range of services to our clients including:

### Road Safety Projects

- Crash investigations
- Option development/Project scoping
- Concept layout plans
- Scope approval reports
- Risk based cost estimates
- Risk assessments
- Road safety audits
- Safe system assessments
- LATM investigation and design

### Pedestrian and Cyclist Facilities

- Shared path audits
- Shared path designs
- Pedestrian crossing facilities
- Pedestrian operated signals

### Public Transport

- Bus/tram priority treatments
- Bus/tram delay surveys
- Patronage surveys
- Bus interchange design

### Traffic Analysis

- Turning movement counts
- Queue length surveys
- Origin-destination surveys
- SIDRA Intersection analysis
- VISSIM Microsimulation
- Functional layout plans
- Traffic signal plans
- Post evaluation assessments
- Parking assessments

## Road Safety

### St Kilda Sub Station

Project: Installation of an electrical sub-station in the centre median of St Kilda Road.

Role: Preparation of a road safety assessment to identify any road safety risks and to recommend improvements.

### Princes Highway, Tynong North

Project: Installation of Electronic Speed Limit Signs (ESLS) to improve safety for traffic turning from a major side road, based on a successful program developed in New Zealand.

Role: Preparation of functional layout plans for two options incorporating electronic speed limit signs on Princes Highway and other traffic improvements.

[Click here for a video demonstrating how the system works.](#)

## Safe System Assessment

### Shepparton Roundabouts

Project: The modification of two existing roundabouts along the Shepparton Alternate Route at Old Dookie Road and New Dookie Road, Shepparton.

Role: Safe system assessments (existing conditions and proposed conditions) in accordance with the AustRoads 'Safe System Assessment Framework'.



## Road Safety Audit

### Great Alpine Road

Project: \$10 million project to improve the Great Alpine Road from Bruthen to Cobruna. This part of the project included the widening of two 500m sections of the road in sections with steep rock walls.

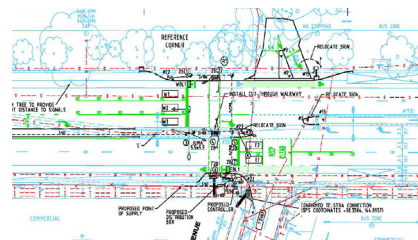
Role: Preliminary design stage road safety audit including recommendations to further improve the safety of the projects.

## Pedestrians

### Rosebud Pedestrian Safety Improvements

Project: Pedestrian safety improvements along Point Nepean Road and Boneo Road including new pedestrian operated signals.

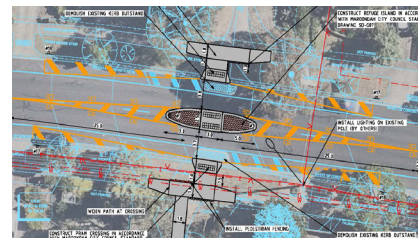
Role: Development of safety improvement options and preparation of concept plans, traffic signal plans and detailed design plans.



### Narr Maen Drive, Croydon Hills Pedestrian Refuge

Project: Construction of a pedestrian refuge island and associated pram ramps to improve facilities along the Croydon Hills walk.

Role: Development of options for a pedestrian refuge island to assist pedestrians walking along the Croydon Hills Walk.

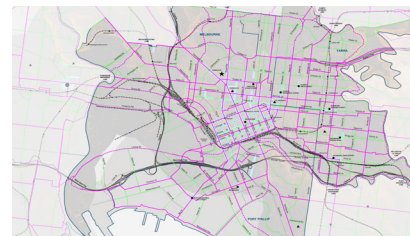


## Cyclists

### Strategic Cycling Corridors Review

Project: Review and update the Strategic Cycling Corridors for the Metropolitan North West Region including updating of GIS maps and consultation with stakeholders.

Role: Update the SCC's in accordance with the Movement and Place framework, organisation and facilitation of 7 stakeholder workshops and update the GIS maps.



## Croydon-Lilydale Shared Path

Project: Construction of a 4km shared use path between Croydon and Lilydale

Role: Pre-Opening stage road safety audit of the recently constructed shared path.



## Trams

### Part Time Tram Lane Upgrades (PTTLs)

Project: Upgrades to improve the compliance and effectiveness of 11 existing part time tram lanes in Fitzroy, Collingwood and Kew.

Role: Investigation, data collection, traffic analysis and plan preparation for the proposed PTTL enhancements.

[Click here for further information about rules you need to know when driving near trams.](#)



## Urban Realm

### Greville Street Urban Realm Improvement

Project: Shared pedestrian zones on Greville Street and Porter Street, footpath widening and other pedestrian improvements.

Role: Post opening road safety audit to review the safety and operation of the reconfigured roads.

[Click here for a time lapse video of the transformation of Greville Street.](#)

## Traffic Engineering

### Southern Peninsula Traffic Investigation

Project: Investigation into alternatives to using the southern peninsula freeway reserve through the environmentally and culturally significant Tootgarook Wetlands.

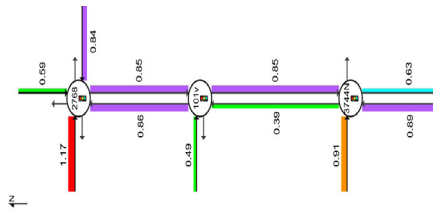
Role: Identification and evaluation of short, medium and long-term traffic congestion management options to reduce traffic congestion on the southern peninsula.



### Dalton Road SIDRA Network

Project: Road network changes to reduce congestion and improve safety including traffic signals, changes to medians, raised pavements and additional traffic lanes at intersections.

Role: SIDRA network modelling of the existing conditions, calibrated to recent traffic surveys, and proposed changes to the road network.



### Great Western Bypass Traffic Assessment

Project: As part of the planning for the duplication of the Western Highway between Ararat and Stawell, a bypass of the Great Western township is proposed.

Role: Traffic data collection and traffic distribution analysis for the bypass based on the existing and proposed road network.

## Accreditation

### VicRoads Pre-Qualification

Traffix Group is pre-qualified in several groups related to traffic management, data collection and transport planning as follows ([click here for link to VicRoads website](#)):

### Traffic Management Services (Consultants)

- Data Acquisition Processing and Analysis
- Traffic Transport Planning and Strategies
- Traffic Operations (Analysis and Design)
- Freight and Freight Vehicle Operations
- Road Safety Auditing

### Traffic Management Services (Contractors)

- Worksite Traffic Management (TMP)
- Traffic Data Collection

### Transport and Planning Studies

- Strategic Transport Planning
- Highway Corridor Planning

### Engineering Services Panels

Traffix Group is a member of consultant panels for VicRoads, Transport Accident Commission and several Councils.

## Industry Affiliations

Traffix Group is proud to be a member of the following industry peak bodies.



## Key Contacts

To discuss how Traffix Group can assist with your next project, please contact:

**Ross Thomson - Senior Associate**  
[ross@traffixgroup.com.au](mailto:ross@traffixgroup.com.au)

**Will de Waard - Director**  
[will@traffixgroup.com.au](mailto:will@traffixgroup.com.au)

## Australian Building and Construction Commission Building Code

Traffix Group complies with the 2016 Building Code.

## Construction Industry Training

Selected staff have undertaken formal Construction Industry Basic Induction Training and have Rail Industry Worker cards.

## Integrated Management System

Traffix Group's Integrated Management System (IMS) meets our quality and safety obligations as outlined in AS/NZS ISO 9001: 2016 and AS/ NZS 45001: 2018 and AS/NZS ISO 14001:2016.